

ASSEMBLY MANUAL

Evolve Mini EHS Far Infrared Sauna



Pre-Assembly Checklist

Selecting a suitable location

Place your sauna on a flat level surface. The sauna can be placed on carpet, tiles, timber flooring, concrete or any other hard, level surface.

A 200mm void above the sauna is required to allow access into the roof, should a lighting or audio part need replacing at some point in the future.

Outdoor Placement

Our saunas are not suitable for placing outdoors.

Assembly Instructions

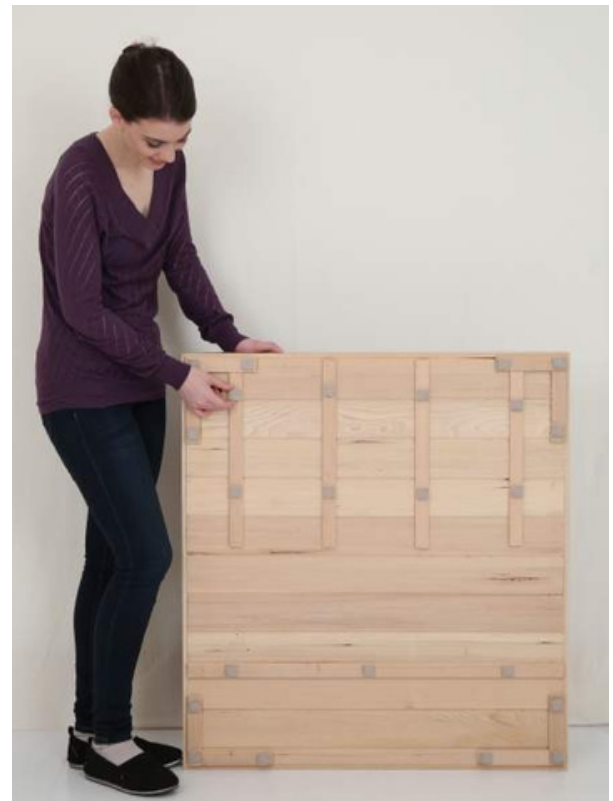
Assembly of the sauna will require 2 adults to complete and should take 1-2 hours. Please read through the instructions carefully before beginning the assembly process. Should you encounter any issues along the way, please contact us on free phone +44 (0) 800 86 11 841.

NB: Please exercise great care when handling the front wall assembly and glass door making sure they do not swing open and break whilst securing in place.

Prepare & Position the Sauna Floor

The sauna needs to be level to ensure the glass door closes flush and tight. Many floors may look level but are actually not.

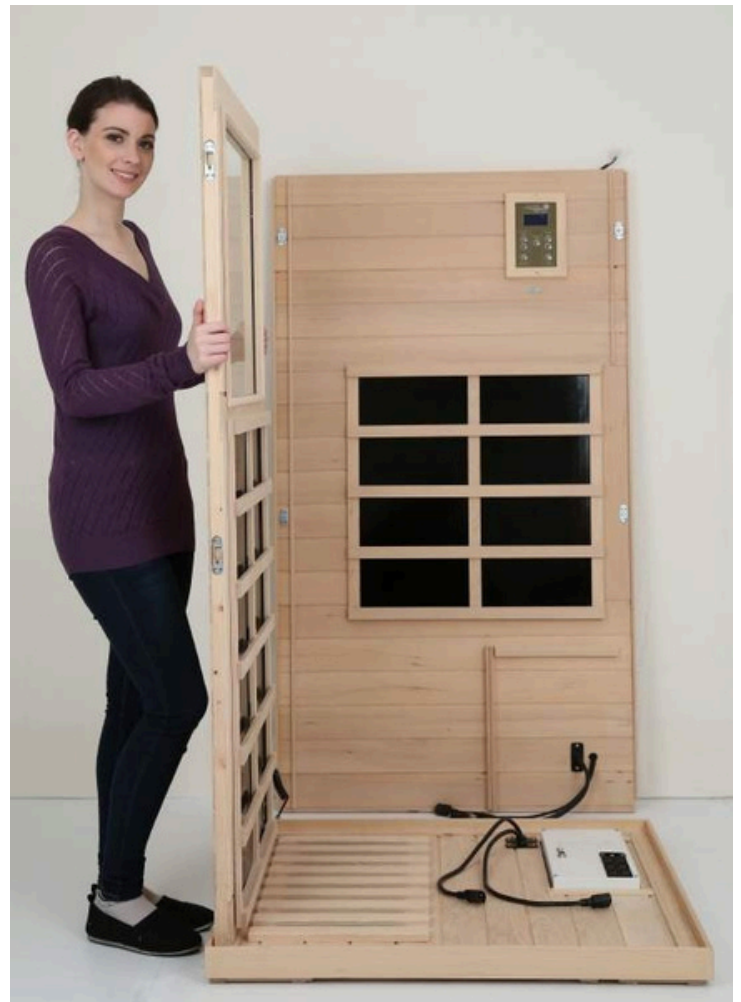
To ensure the sauna will be level once built, before starting any assembly, first place the floor base in its intended final location and check it is level using a spiritual level. Check it is level on all four sides. If the floor is not level, attach the packers provided to the bottom of the floor panel until the base is level.





Left Side Wall

Place the Left Side Wall on your floor behind the sauna Floor Base.



Front Wall

Insert the Front Wall (with window) into the channel in the sauna Floor Base



Front Left Corner

Connect the Left Side Wall to the Front Wall by raising the Front Wall approx 1/2" then sliding down to connect the 2 fasteners.

Cinch the two walls together by applying pressure on the outside of the Side Wall with the inside of your knee.

Hold Left Side Wall DOWN while sliding Front Wall UP.

It is helpful if the second person applies pressure against the opposite edge of the Front Wall. This will help ensure that the two walls remain in contact and the fasteners will connect.

NOTE: It is NOT necessary to lift the entire Front Wall. Simply slide the Front Wall upward at the front corner of the sauna to connect to the Side Wall

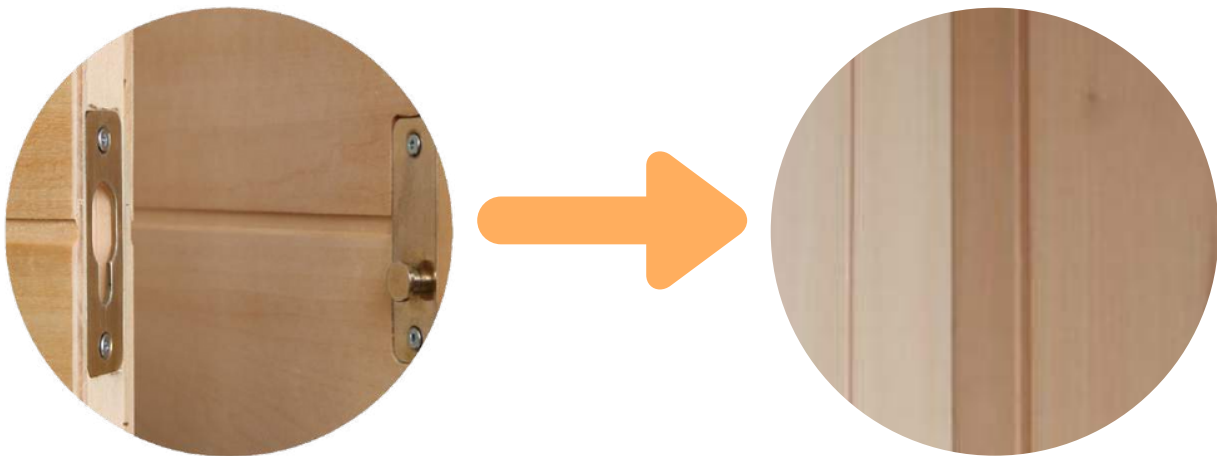
Fasteners

It may be that your sauna's fasteners (Tab and Keyhole) are installed opposite to those pictured. In such a case, the Wall which slides up will be opposite to that shown.

Guiding Rule: Always slide the Wall with the Tab fastener UP then DOWN on to the Wall with the Keyhole fastener.



The wall with the Tab Fastener always slides UP then DOWN on to the wall with the Keyhole fastener



There are two sets of fasteners to join the saunas' corners together. After lowering the front wall, check to ensure that both sets of fasteners have connected by looking at the corner inside of the sauna. It is possible to connect one set of fasteners and miss the other. If there is an obvious gap in the corner between the two walls the fasteners have not connected and the raising and lowering procedure will need to be repeated.

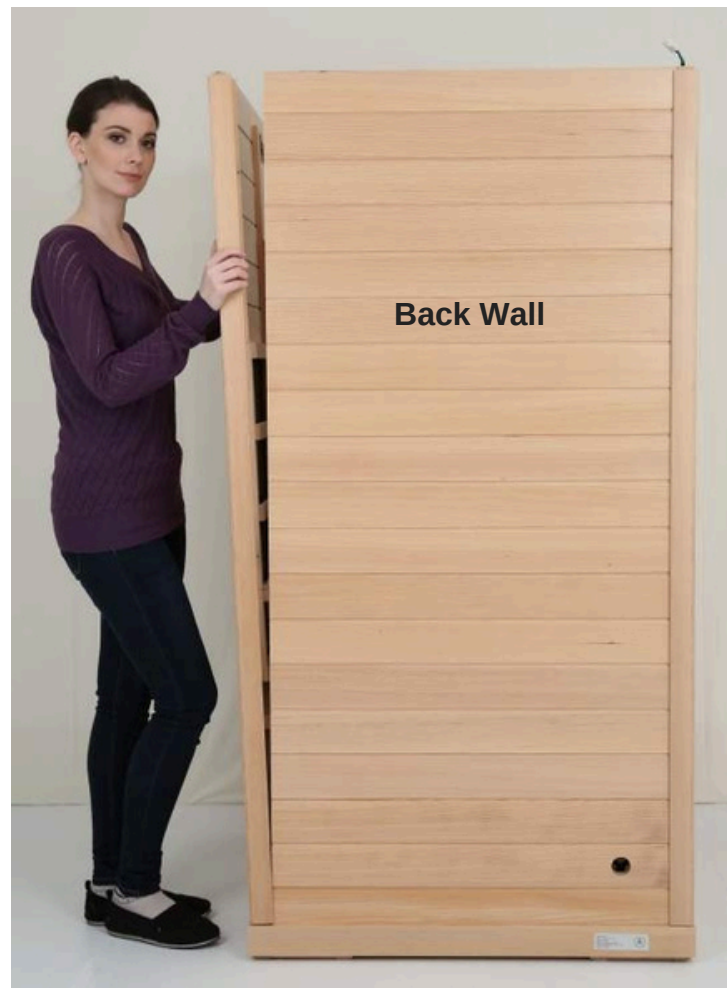


Back Left Corner

Repeat the procedure to connect the Back Wall to the Left Side Wall. Raise the Wall with the Tab Fastener approx 1/2" then slide down to connect the 2 fasteners.

Cinch the two walls together by applying pressure on the outside of the Side Wall with the inside of your knee.

Position Right Side Wall (with door)
Insert the Right Side Wall into the channel in the Floor Base



Back Right Corner

Connect the Back Wall to the Right Side Wall. Raise the Wall with the Tab Fastener approx 1/2" then slide down to connect the 2 fasteners.

Cinch the two walls together by applying pressure on the outside of the Side Wall with the inside of your knee.



Front Right Corner

Repeat the procedure to connect the Right Side Wall to the Front Wall.



Connect the Front Wall heater electrical lead to the power supply adjacent.

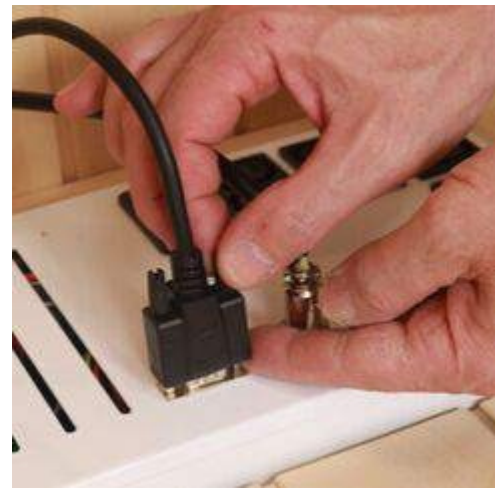
Ensure that the connector is fully inserted and that the threaded cuff is fully screwed onto the adjacent connector.

Under-Bench Electrical
NOTE: Do not connect main power cord to your wall outlet at this time.





Connect the circular connector to Power Supply Box.
Align the groove in connector to properly insert. Thread the cuff of the connector on fully.



Attach the 'D-Sub' computer style connector as shown.



Plug in all heater leads to the receptacles in the Power Supply Box.

Feed the main Power Supply Cord in through the hole in the Back Wall and insert in Power Supply Box.

Do NOT plug Power Cord into your wall outlet until all electrical connections are finished inside of the sauna and for the Roof.



Remove Side Wall Heater Guards

The wooden lattice work in front of the heaters is referred to as the heater guard. These are held in place with strong magnets. It is necessary to remove the heater guards from the two side walls in order to install the leg heater and the sauna bench.



Leg Heater

Install the Leg Heater by lowering it into the holding brackets mounted on the side walls.

Plug the Leg Heater into the power supply box in floor.

Connecting the ground wire



Install Bench

Angle the Bench into place to clear the Side Wall window frames. The Bench installs foil side down.



Connect the **grounding wire** from bottom side of Bench as shown



Lower the Bench into Position

Ensure that 12V DC power line from the Roof (with white plastic connector) is accessible before installing the Roof.



If you are unable to grab hold of the 12V power line from inside the roof it may be necessary to remove the first T&G board on the Roof (access panel) and feed the wire down through the hole in the roof.

Install Sauna Roof

Lower the Roof into place by first fitting the Door side of Roof on the sauna Walls
Keep the opposite side of Roof elevated to enable connection of the 12 V power supply line.





Connect the 12 V power line between the Side Wall and Roof.
Tuck the white plastic connector inside of the Roof and lower the Roof into place.
It may be necessary to gently push on the inside or outside of the walls to align tops of walls with the Roof channel.



Reinstall the roof access panel if necessary
Note: Please see 'Audio System' section regarding the Roof access panel.

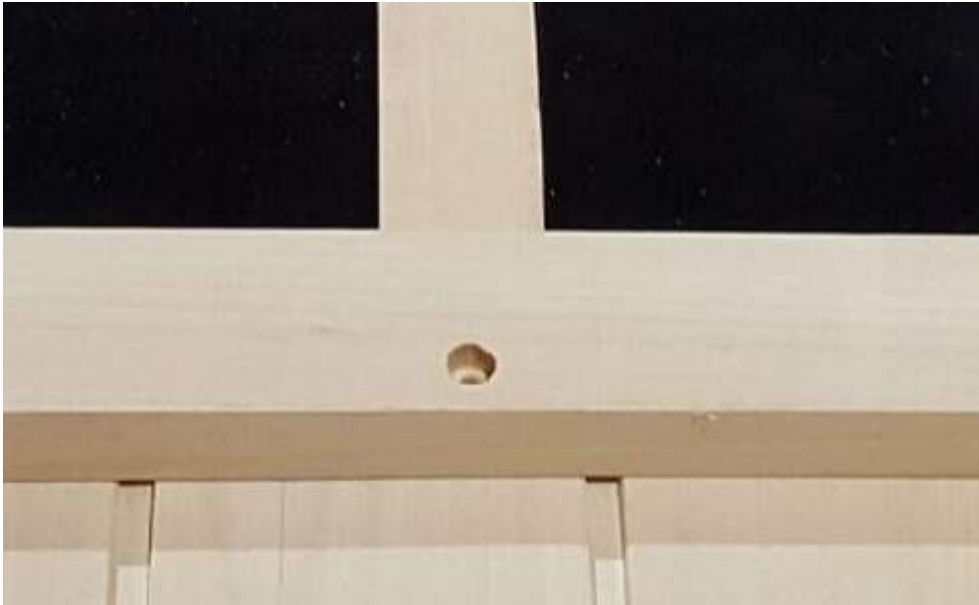
Install the Door Handle



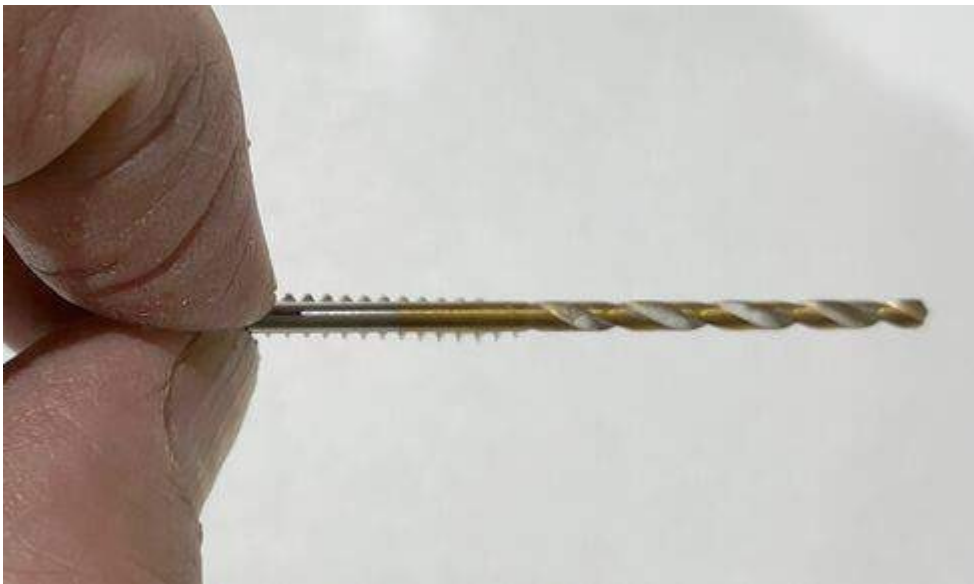
Heater Guards

The heater guards in your new sauna are held in place to the wall with strong magnets. This allows easy removal for cleaning of the heater panels behind. It is not necessary, and it is NOT recommended, however if you prefer, the heater guards can be screwed directly to the wall for a more permanent attachment. The heater guards are pre-drilled for the attachment screws.

The below instructions involving screwing the guards to the wall are optional only.



Screws are included to attach the heater guard to the wall. Select a drill bit with a smaller diameter than the screw threads to drill a pilot hole





Optional only

Drill a pilot hole into the wall through the holes in the heater guards. Do not drill deeper than necessary for the length of the screw.

NOTE: The pilot holes are important to ensure that the tongue and groove wall boards do not split when installing screws.

Install screws to firmly attach heater guard to the wall



Accessories



Backrests

Your new Sun Stream Sauna comes equipped with backrests constructed from Western Red Cedar. Position the backrest as pictured to provide lower back support and to position yourself a comfortable distance from the Infrared heater panels.



Cupholder Many of our customers simply set the cup holder on the bench of the sauna. In the Evolve 10, 20 and 30 saunas, the cup holder can be mounted on the side wall under the heater panels. Be sure to drill pilot holes first for the wood screws to mount cup holder to the T&G wall boards.

Aromatherapy

Enjoy the aroma of your favorite essential oils, such as eucalyptus or lavender, while in the sauna. Add water and a few drops of your essential oil to the aromatherapy glass which can be hung on the wall heater guard.

